

**0.375" PITCH, SERIES RSB6**

**PHYSICAL PROPERTIES**

HOUSING MATERIAL: Polypropylene  
FLAMMABILITY: UL94V-2  
COLOR: Black

**TERMINAL**

TERMINALS: Brass, bright acid tin over copper plating  
SCREW: Steel w/Zinc + Chromate plating  
CLAMP: Steel w/Zinc + Chromate plating

**MECHANICAL**

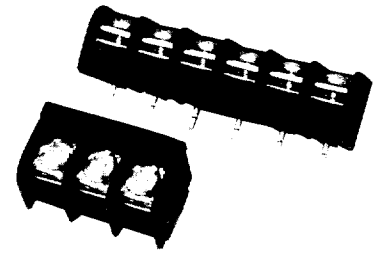
PITCH (TERMINAL SPACING): .375"  
SCREW SIZE: 6-32  
RECOMMENDED PCB HOLE DIA.: .062"  
WIRE STRIP LENGTH: .38"  
RECOMMENDED TIGHTENING TORQUE: 12 in.-lbs.  
RECOMMENDED SCREWDRIVERS: Stanley 1006-4,  
Sears Craftsman 41581, Any #2 Phillips-Head  
WIRE LUG WIDTH (MAX.): 8,1mm (.320")

**ELECTRICAL PROPERTIES**

MAXIMUM CURRENT: 20A  
OPERATING VOLTAGE: 300V  
WIRE RANGE: (Clamp Screw) #12 max AWG  
(Binding Head Screw) #14 max AWG  
DIELECTRIC WITHSTAND: 3500V

**ENVIRONMENTAL PROPERTIES**

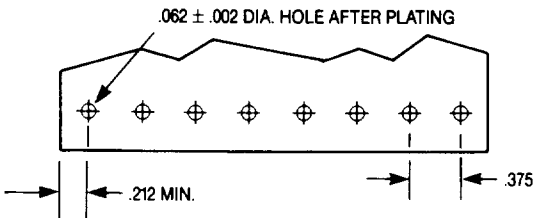
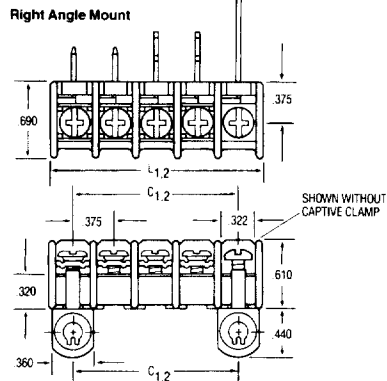
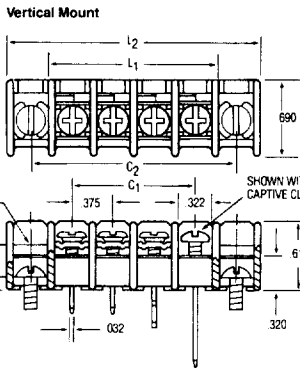
OPERATING TEMPERATURE RANGE:-60°C to +105°C  
(-76°F to +221°F)



**RSB6RP##1102**

**Dimensions**

CIRCUITS (NOT POSITIONS)	C1 IN.	L1* IN.	C2 IN.	L2* IN.
01			.75	1.22
02	.37	.84	1.13	1.59
03	.75	1.22	1.50	1.97
04	1.13	1.59	1.88	2.34
05	1.50	1.97	2.25	2.72
06	1.88	2.34	2.63	3.09
07	2.25	2.72	3.00	3.47
08	2.63	3.09	3.37	3.84
09	3.00	3.47	3.75	3.84
10	3.37	3.84	4.13	4.59
11	3.75	4.22	4.50	4.97
12	4.13	4.59	4.88	5.34
13	4.50	4.97	5.25	5.72
14	4.88	5.34	5.63	6.09
15	5.25	5.72	6.00	6.47
16	5.63	6.09	6.38	6.84
17	6.00	6.47	6.75	7.22
18	6.38	6.84	7.13	7.59
19	6.75	7.22	7.50	7.97
20	7.13	7.59	7.88	8.34
21	7.50	7.97	8.25	8.72
22	7.88	8.34	8.63	9.09
23	8.25	8.72	9.00	9.47
24	8.63	9.09	9.75	9.84
25	9.00	9.47	9.75	10.22
26	9.38	9.84	10.13	10.59
27	9.75	10.22	10.50	10.97
28	10.13	10.59	10.88	11.34
29	10.50	10.97	11.25	11.72
30	10.88	11.34	11.63	12.09
31	11.25	11.72	12.00	12.47
32	11.63	12.09	12.38	12.84
33	12.00	12.47	12.75	13.22
34	12.38	12.84	13.13	13.59
35	12.75	13.22	13.50	13.97
36	13.13	13.59	13.88	14.34



**Recommended PCB Hole Pattern**

**COMPUTING RSB BLOCK LENGTHS**

DIRECT MOUNTING – Use C1 & L1 for VP, SP, RP mounting options

END POSITION MOUNTING – Use L2 & C2 for VM, SM, RM, VE, SE, RE mounting options



Tri-Barrier Strips

### 0.375" PITCH, SERIES RSB6

#### ORDERING INFORMATION

RSB  
A
6  
B
R  
C
P  
D
07  
E
11  
F
02  
G
11  
H

**A Single Screw Tri-Barrier Strips RSB**

**B Contact Spacing**  
6=.375 in. (6/16)

**C Mounting Position Options**  
**R**= Right-angle mounting, w/out bracket  
**S**= Right-angle mounting, with bracket  
**V**= Vertical Mounting

**D End Contact Options**  
**E**= Open end pos. with mounting inserts  
**M**= Open end positions  
**P**= All positions filled with contacts

**E No. of Circuits (Not Positions)**  
**02** through **34** for M Option  
**02** through **36** for P Option

**F Terminal Style**  
**11**=Solder Tail, V Mounting, **superseded by 6STV**  
**12**=Circuit Board, V Mounting (select this option when block is to be used with RSB plug-in socket)  
**13**=Non-Feed Through, R, S or V Mounting, **superseded by 6TBV**  
**14**=Solder Tail, R or S Mounting, **superseded by 6STR**  
**15**=Circuit Board, R or S Mounting, **superseded by 6PCR**  
**16**=Machine Wrap, R or S Mounting, **superseded by 6WWR**  
**17**=Machine Wrap, V Mounting, **superseded by 6WVW**  
**19**=Extended Circuit Board, V Mounting  
**20**=Extended Circuit Board, R or S Mounting

**G Top Hardware Options**  
**01**=Bright zinc and chromate plated steel binding-head screw  
**02**=Bright zinc and chromate steel screw and captive clamp - Do not order in combination with other top hardware  
**03**=Stainless steel binding-head screw  
**04**=Nickel plated brass binding-head screw  
**09**=Nickel plated brass screw and captive clamp - Do not order in combination with other top hardware

**Quick-Connect Blades**  
(supplied with 01 screw)

		.110 wide	.187 wide	
		x.032	x.020	
		thick	thick	
	22		42=	□
	23		43=	□
	24		44=	□
	25		45=	□
	29		49=	□
	30		50=	□
	31		51=	□
	33		53=	□
	35		55=	□
	36		56=	□

**H Circuit Identification Options**  
Request drawing C7013624 for complete information

Front	Top
<b>11</b>	<b>21</b> = 12345...
<b>12</b>	<b>22</b> = ...54321
<b>13</b>	<b>23</b> = ... 5 4 3 2 1 ...
<b>14</b>	<b>24</b> = ... 5 4 3 2 1 ...
<b>15</b>	<b>25</b> = 12345...
<b>16</b>	<b>26</b> = ...54321
<b>17</b>	<b>27</b> = ... 5 4 3 2 1 ...
<b>18</b>	<b>28</b> = ... 5 4 3 2 1 ...

Tri-Barrier Strips



Dimensions are shown for reference purposes only.  
Specifications subject to change.

Dimensions are in millimeters and inches unless otherwise specified.  
Values in brackets are metric equivalents.

Before ordering, see cross reference starting on page 333 for equivalent Tyco Electronics part numbers.

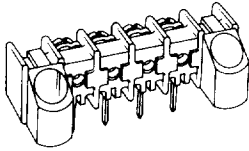
If no equivalent part number is listed, contact the Technical Support Center at 1-800-522-6752.  
www.tycoelectronics.com

**0.375" PITCH, SERIES RSB6, FEATURES/OPTIONS**

**MOUNTING & CONTACT POSITION OPTIONS**

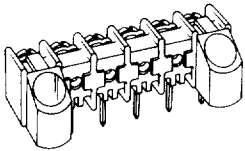
**Right-Angle, End Positions Blank**

CATALOG CODES **SM & RM**: Used for right-angle mounting when blank end sections are preferred.



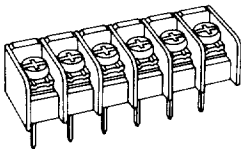
**Right-Angle, All Positions Filled With Contacts**

CATALOG CODES **SP & RP**: Can be used for right-angle printed circuit board mounting without mounting brackets (RP); or panel mounting with brackets (SP).



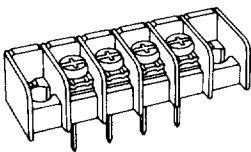
**Vertical, Direct Mounting**

CATALOG CODE **VP**: This configuration is frequently used on printed circuit boards where solder connections are used to fasten the block to the board.



**Vertical, End Position Mounting**

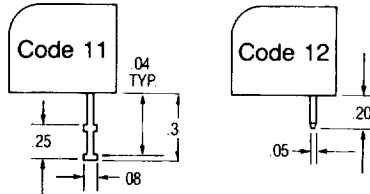
CATALOG CODE **VM**: Used where end sections are needed for mounting. Thickness of base is sufficient to support mounting screws.



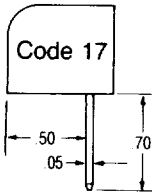
**TERMINAL STYLE**

**Vertical Terminals**

CATALOG NUMBER CODES **11, 12, & 17**: Four terminal styles are available in the vertical mounting configuration. The Solder Tail (#11) for wrapped solder connections, the Circuit Board (#12) for printed circuit boards, and the Machine Wrap (#17) for two-level printed circuit boards or wrapped wire connections.



Superseded by **6STV**

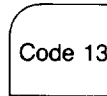


Superseded by **6WVV**

**Non-Feed-Through**

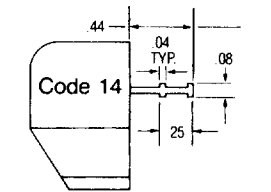
CATALOG NUMBER CODE **13**: Screw connection only. Used as panel mounted tie point.

Superseded by **6TBV**

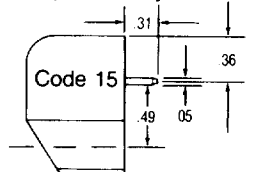


**Right-Angle Contacts**

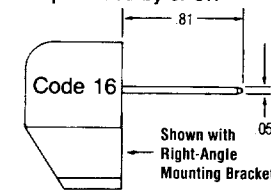
CATALOG NUMBER CODES **14, 15 & 16**: The Solder Tail (#14), Circuit Board (#15), and the Machine Wrap (#16) terminals are also available in the right-angle mounting configuration.



Superseded by **6STR**

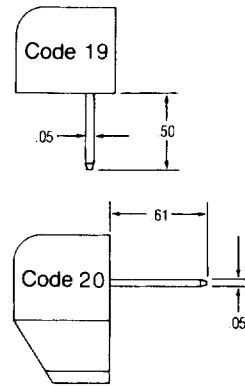


Superseded by **6PCR**



Superseded by **6WWR**

**EXTENDED CIRCUIT BOARD**



**TOP HARDWARE OPTIONS:**

**Binding Head Screws**

Four Styles Available.



**Captive Clamp**

CATALOG NUMBER CODE: **02 & 09**.

For applications requiring extra security, captive clamps under the screw heads augment the locking tabs on each contact.

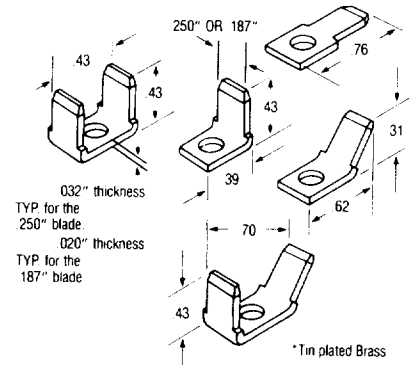
Screws have #8

pan head with a unique Phil-slot design accepting either Phillips-head or straight screwdriver. The body is #6 to allow use of larger wire.



**Quick Connects**

CATALOG CODE **BELOW**: A selection of .187" and .250" quick connect blades with tin plated brass are available for connecting wire terminated with female quick-connects. They are available individually or in combination. See ordering information.



Tri-Barrier Strips

